

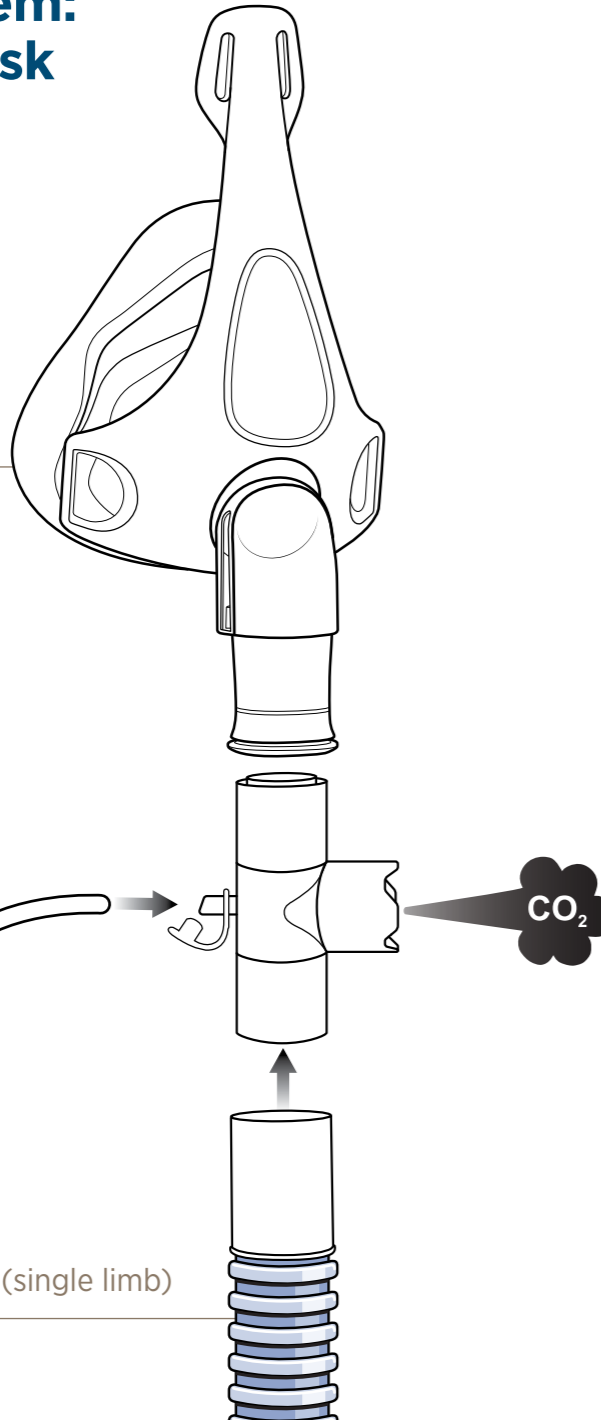
Noninvasive Positive Pressure Ventilation

F&P Nivairo™ | Application guide

Vented System: Full Face Mask

Recommended setup

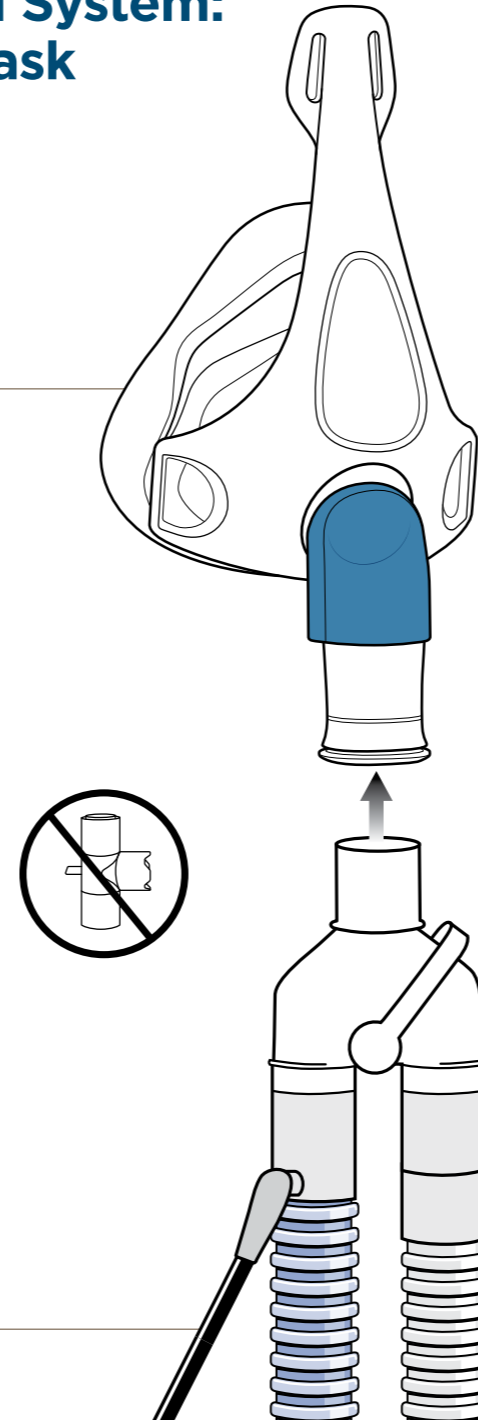
RT045 non-vented full face mask with anti-asphyxiation valve



Non-Vented System: Full Face Mask

Recommended setup

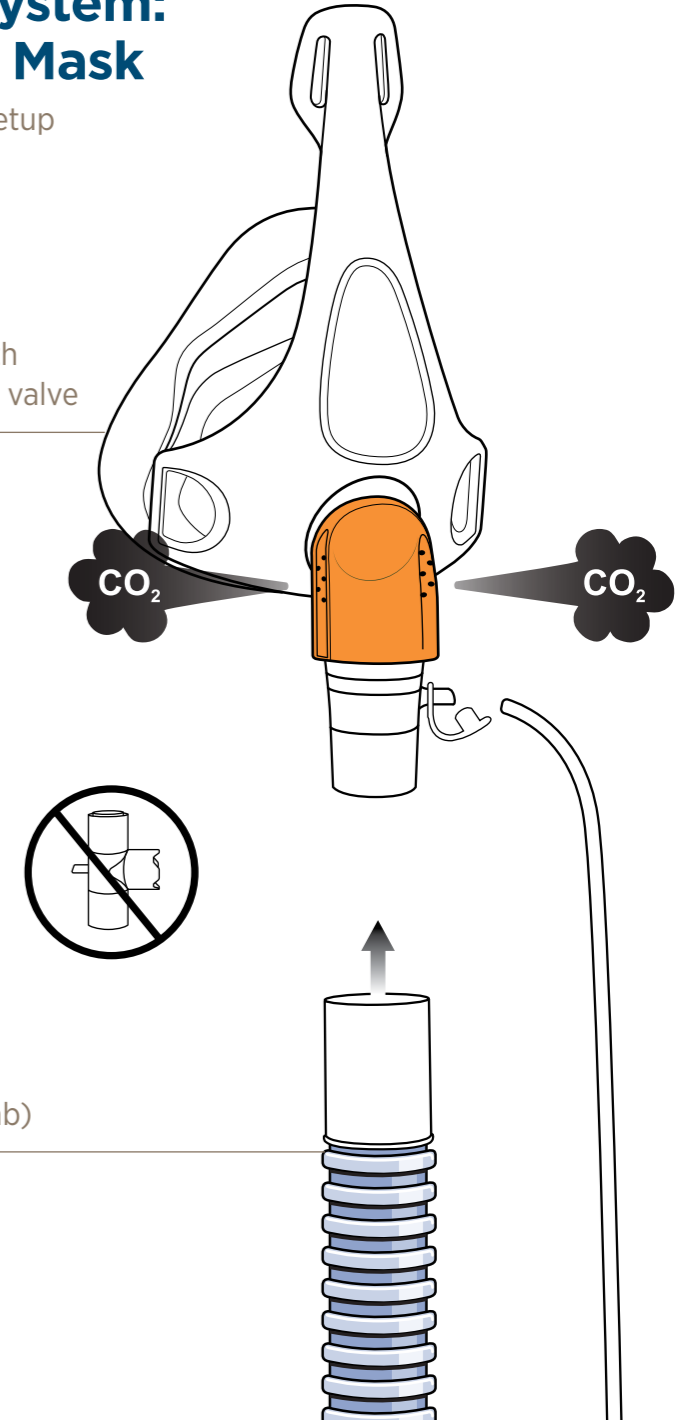
RT046 non-vented full face mask



Vented System: Full Face Mask

Recommended setup

RT047 vented full face mask with anti-asphyxiation valve



Always refer to the User Instructions supplied with the product for a full list of instructions, warnings, contraindications and explanations. Please note not all products are available in all countries.

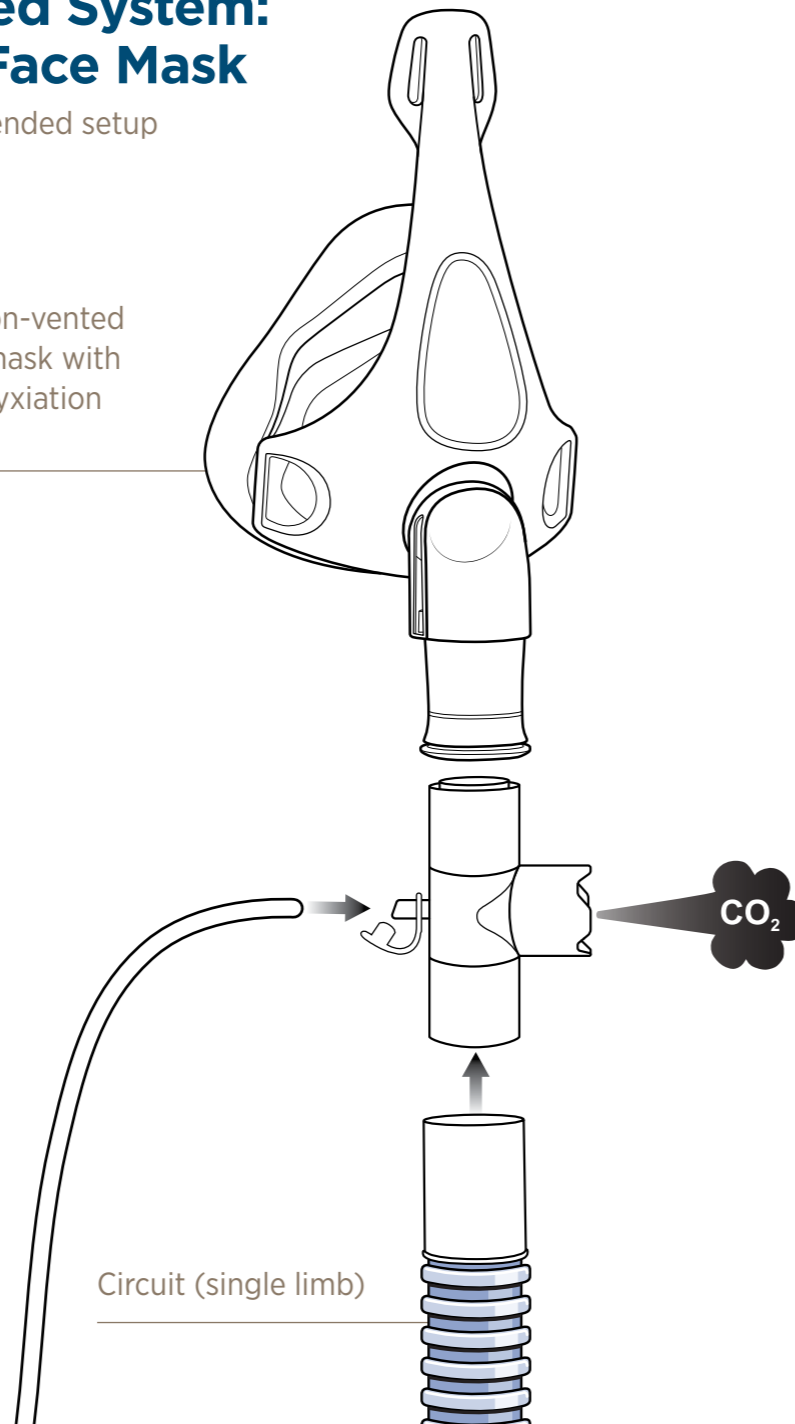
Noninvasive Positive Pressure Ventilation

F&P Nivairo™ | Application guide

Vented System: Full Face Mask

Recommended setup

RT045 non-vented
full face mask with
anti-asphyxiation
valve



Always refer to the User Instructions supplied with the product for a full list of instructions, warnings, contraindications and explanations. Please note not all products are available in all countries.

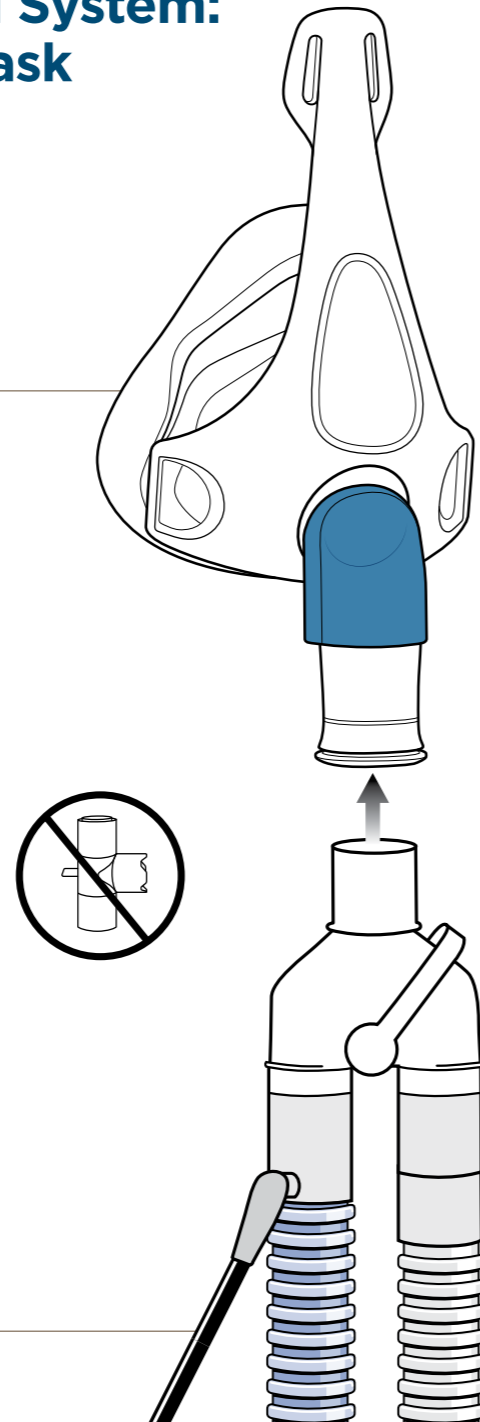
Noninvasive Positive Pressure Ventilation

F&P Nivairo™ | Application guide

Non-Vented System: Full Face Mask

Recommended setup

RT046 non-vented
full face mask



Circuit (dual limb)

Always refer to the User Instructions supplied with the product for a full list of instructions, warnings, contraindications and explanations. Please note not all products are available in all countries.

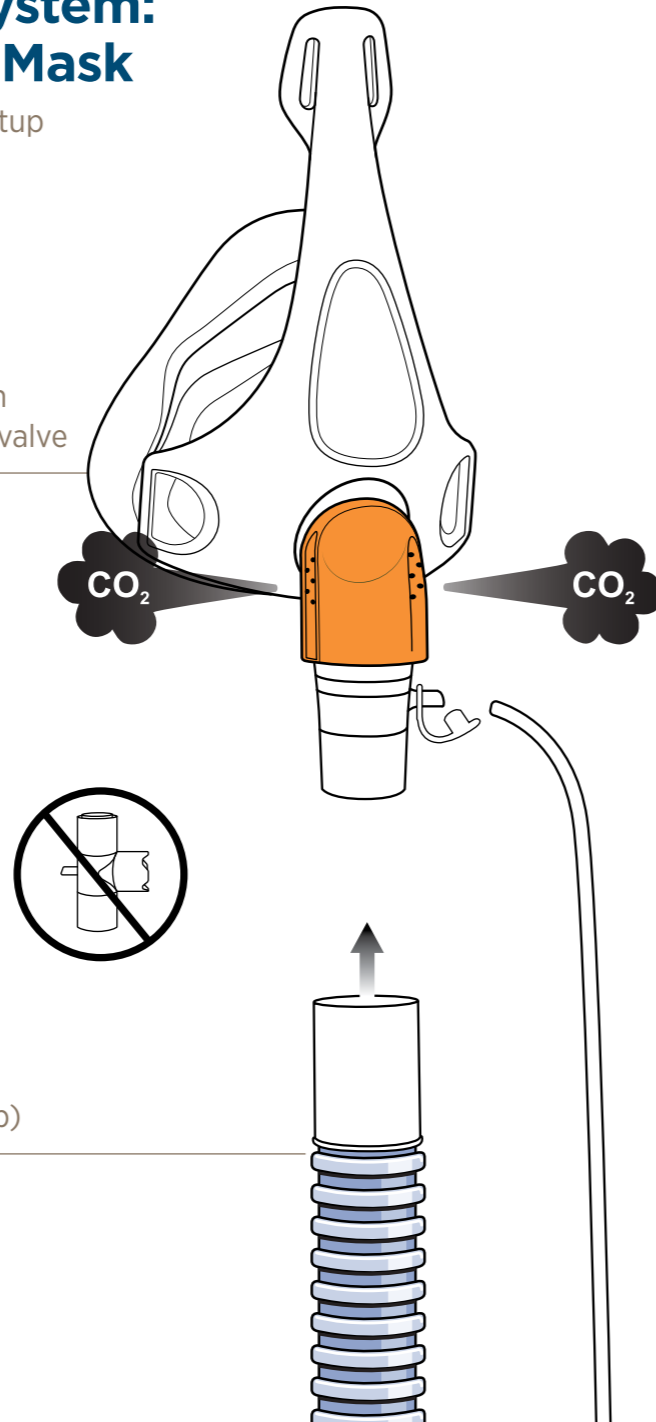
Noninvasive Positive Pressure Ventilation

F&P Nivairo™ | Application guide

Vented System: Full Face Mask

Recommended setup

RT047 vented
full face mask with
anti-asphyxiation valve



Circuit (single limb)

Always refer to the User Instructions supplied with the product for a full list of instructions, warnings, contraindications and explanations. Please note not all products are available in all countries.

Noninvasive Positive Pressure Ventilation

F&P Nivairo™ | Application guide

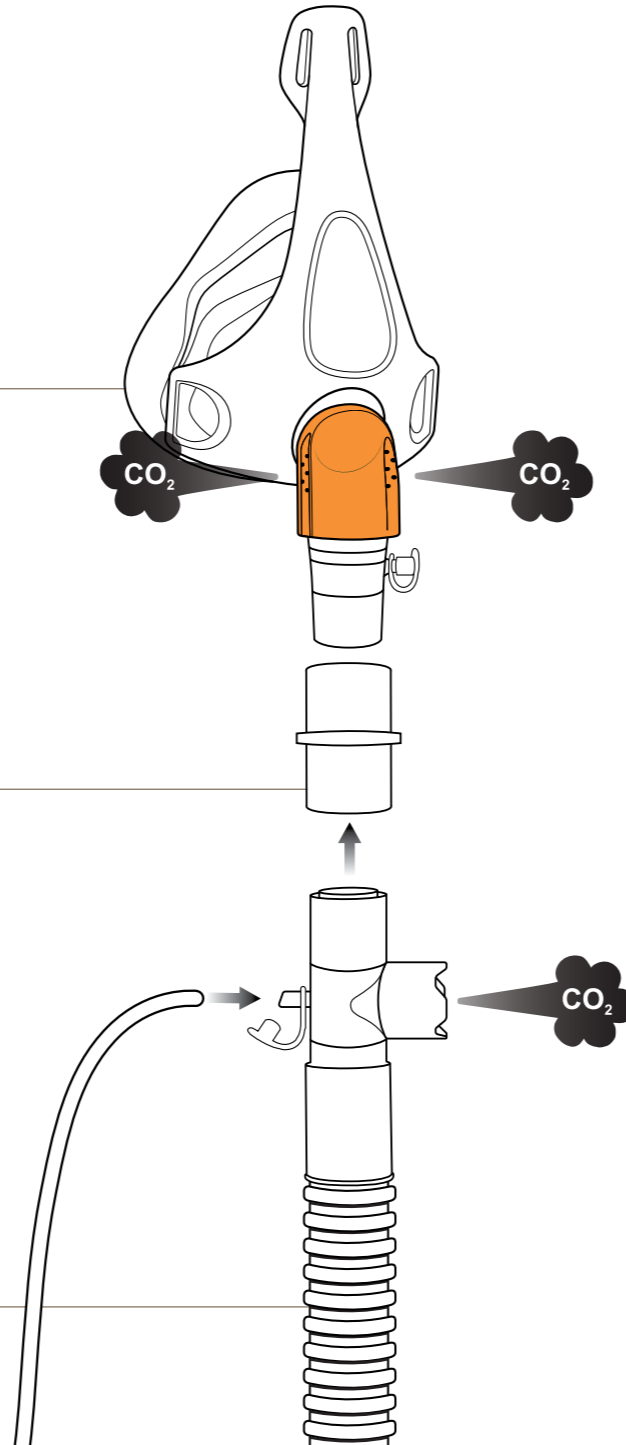
Vented System: Full Face Mask

Recommended setup

RT047 vented
full face mask with
anti-asphyxiation valve

22mm
female-female
connector

Single limb circuit
with built-in exhalation port



Always refer to the User Instructions supplied with the product for a full list of instructions, warnings, contraindications and explanations. Please note not all products are available in all countries.

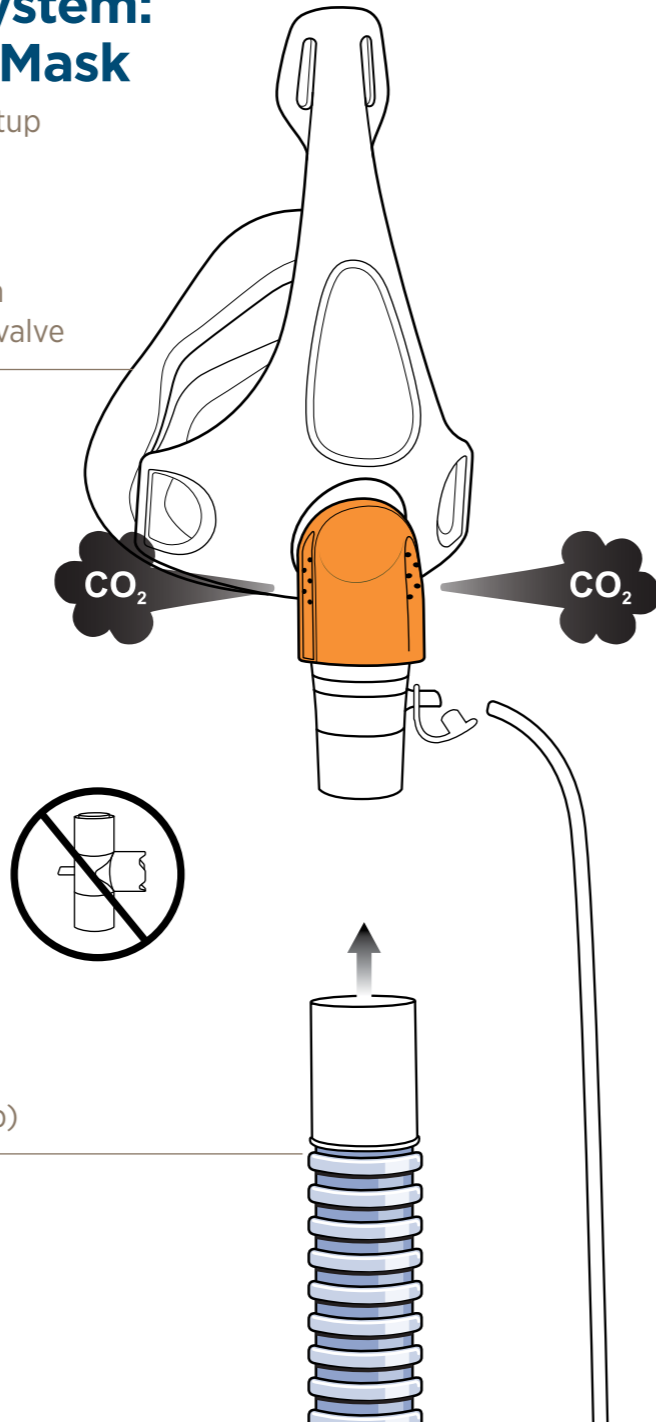
Noninvasive Positive Pressure Ventilation

F&P Nivairo™ | Application guide

Vented System: Full Face Mask

Recommended setup

RT047 vented
full face mask with
anti-asphyxiation valve

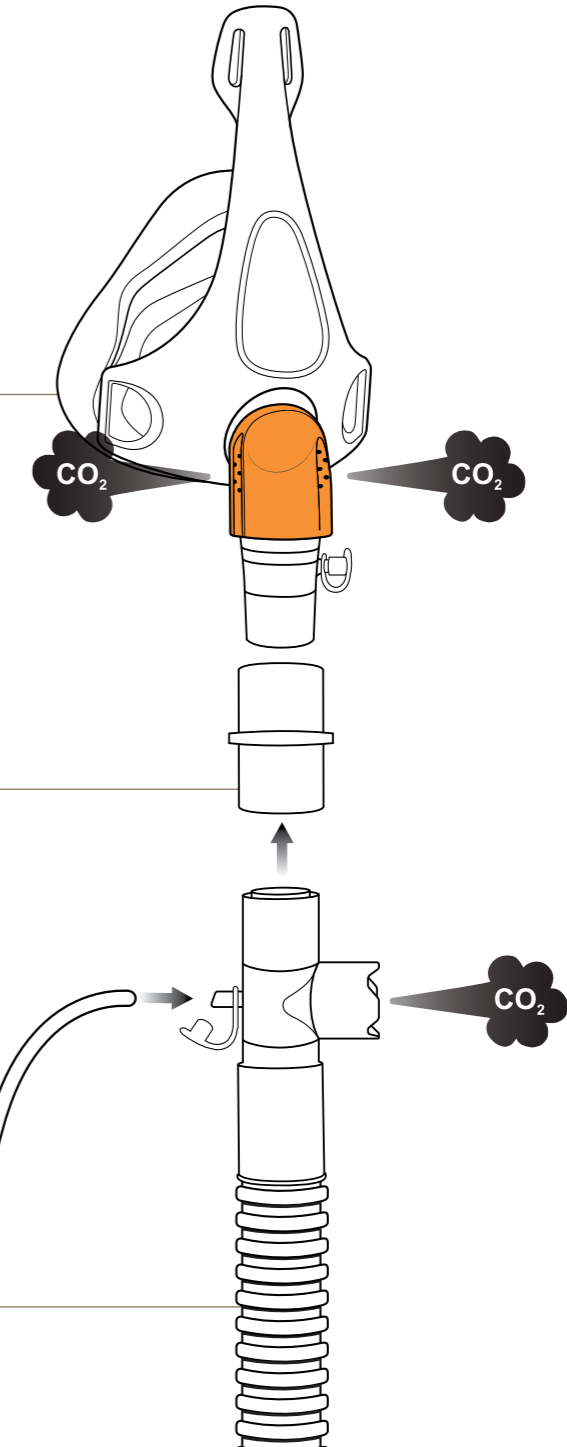


Circuit (single limb)

Vented System: Full Face Mask

Recommended setup

RT047 vented
full face mask with
anti-asphyxiation valve



22mm
female-female
connector

Single limb circuit
with built-in exhalation port

Always refer to the User Instructions supplied with the product for a full list of instructions, warnings, contraindications and explanations. Please note not all products are available in all countries.