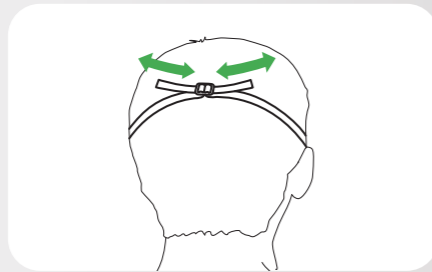
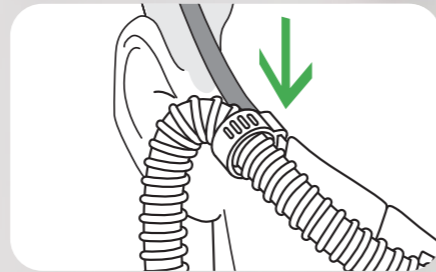


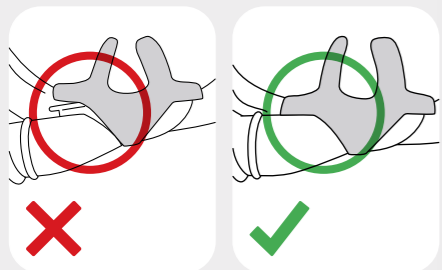
1
Select appropriate size. Prongs must not create a seal in the nares. A clear gap must be visible around each prong.



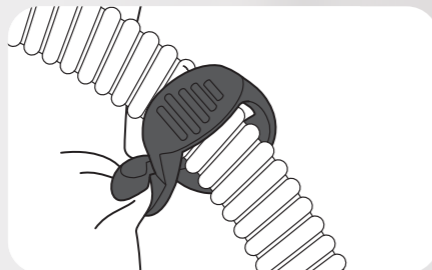
2
Place headstrap across crown of the head. Adjust the headstrap to fit. Do not over-tighten.



3A
Ensure headstrap clip is attached, to prevent cannula from being pulled out of the nares.



3B
Cannula can become unattached if not used with the headstrap clip.



4
Attach tubing clip to clothing or bedding to prevent cannula from pulling off face.

