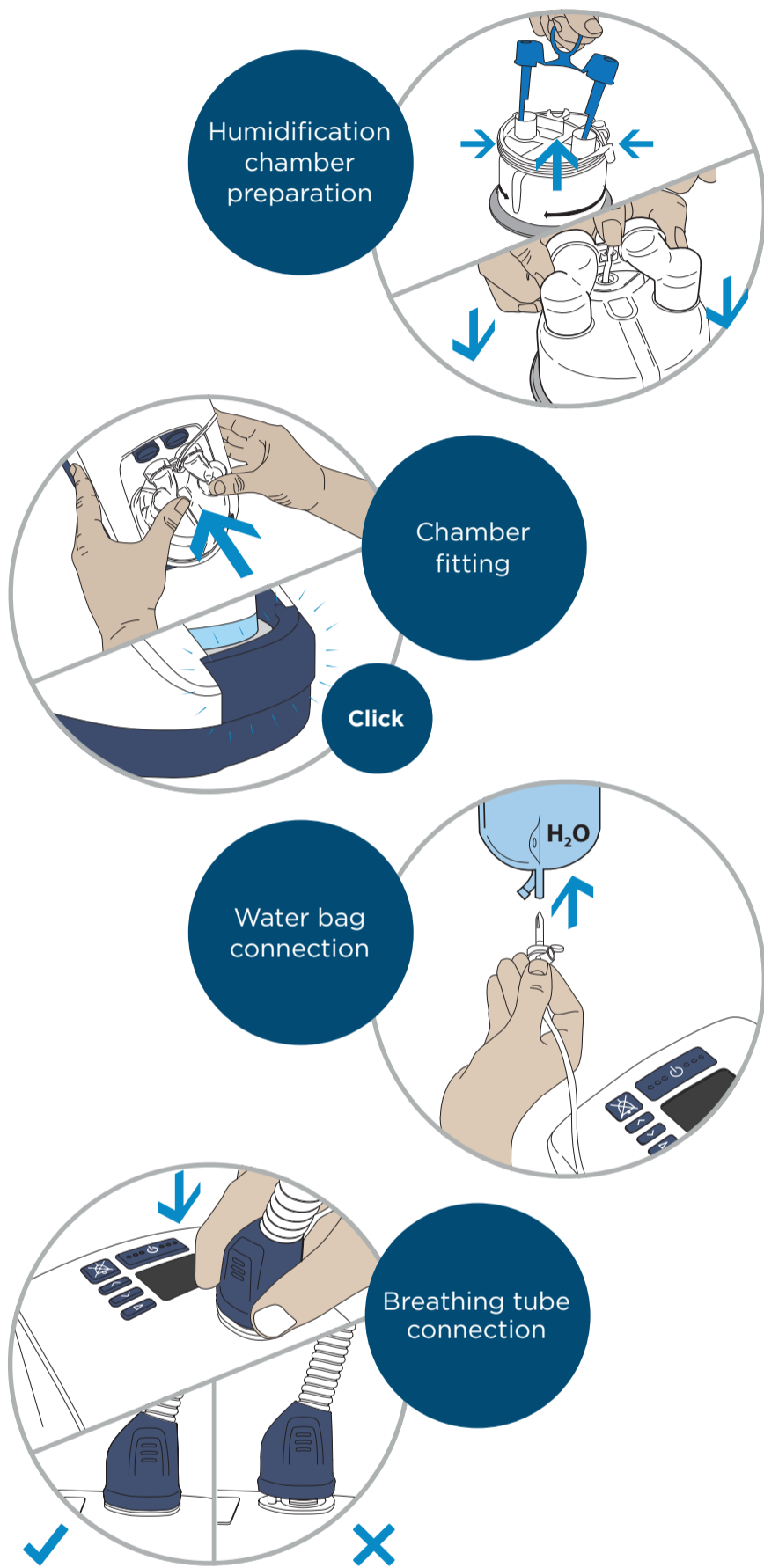
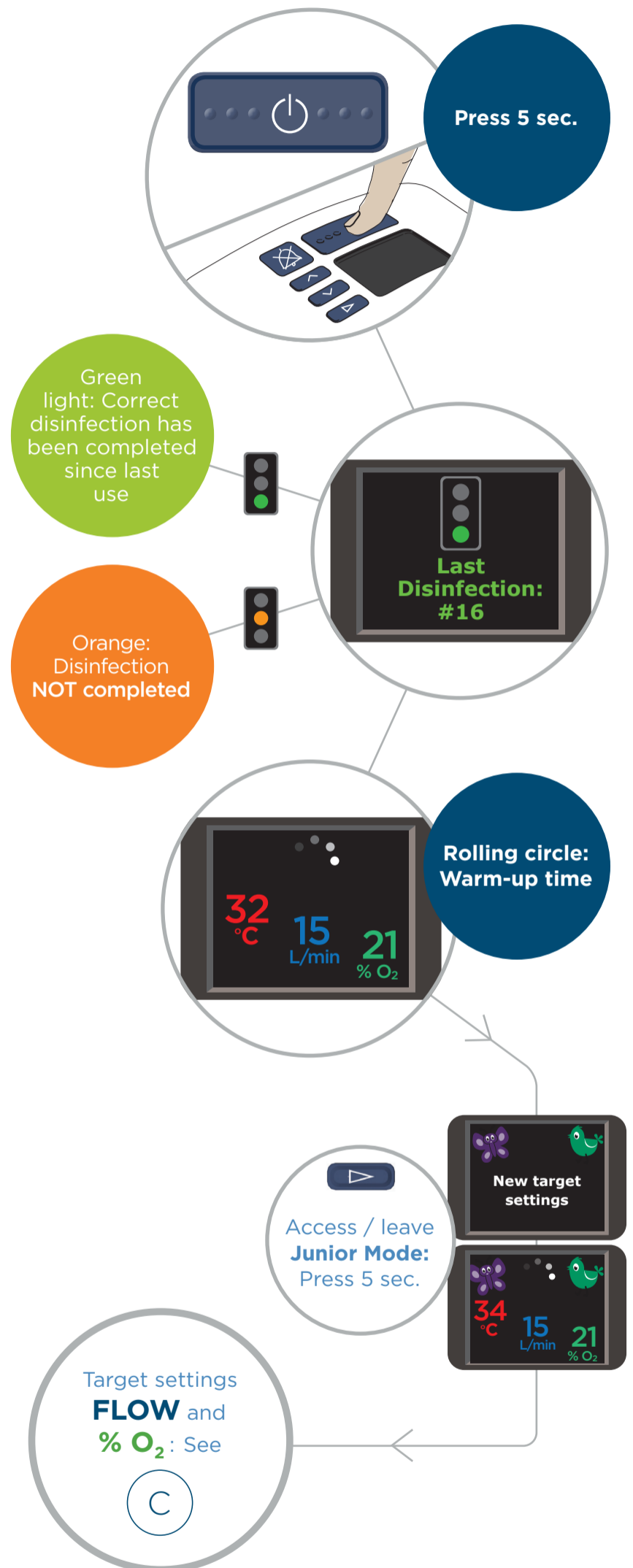


**A**  
**Setup**



Scan the relevant QR code above to download the AIRVO 2 simulator app to your smartphone.

**B**  
**Start**



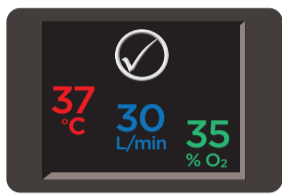
This content does not replace the User Instructions. For a full product setup description, cautions, hazards and warnings, please refer to the User Instructions provided with the product.

C

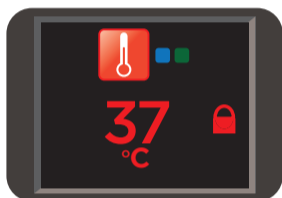
Settings

1 Target Flow Setting

Access the target flow setting.



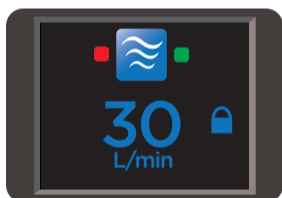
Move past the temperature setting menu.



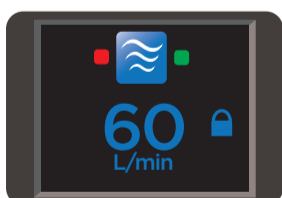
Adjust target flow:



If the setting menu is locked (🔒), unlock by pressing 3 sec: ⏏



Parameter setting adjustment

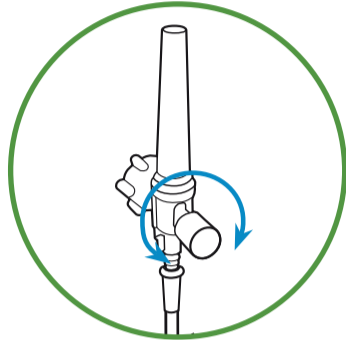


Exit the menu settings.

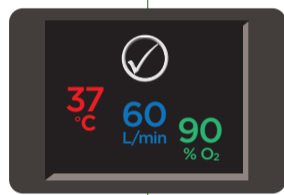


2 % O<sub>2</sub> Setting

Adjust the O<sub>2</sub> flow meter to change % O<sub>2</sub> value.



Note: This will NOT affect the delivered patient flow.

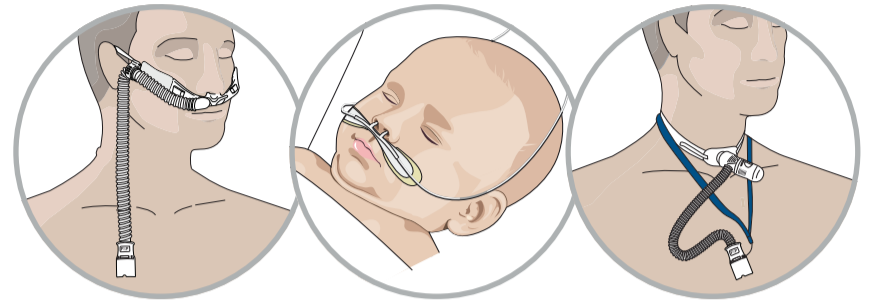


3 When the target flow setting is adjusted:

New target flow setting adjustment (item 1) will change the delivered % O<sub>2</sub>. If required, adjust the % O<sub>2</sub> (item 2).

D

Patient interfaces



Nasal

Tracheostomy

OPT942  
OPT944  
OPT946

OJR416  
OJR418

OPT970

Available target settings

	Temp °C			Flow L/min						
	31	34	37	2	5	10	15	20	25 - 55	60
OJR416		●		2		20				
OJR418		●		2		25				
OPT942 S		●	●			10		50		
OPT944 M		●	●			10		60		
OPT946 L		●	●			10		60		
OPT970			●			10		60		

Turn Off

Press 5 sec. →



Cleaning and disinfection

