



POWER BUTTON

To turn ON, press the power button briefly. Warm-up time is less than 30 minutes. To turn OFF, press and hold the power button for one second.



INVASIVE MODE

For use with patients whose upper airways have been bypassed by either a tracheostomy or endotracheal tube or when using Optiflow. In this mode of operation the humidifier aims to deliver physiological humidity (37°C, 100% RH). This mode is the default when the humidifier is turned on.

Invasive mode is recommended for all infant respiratory therapies.



MODE BUTTON

When held down for one second, the mode button toggles the humidifier between noninvasive and invasive mode. The mode indicator LED shows the user which mode is selected.



NONINVASIVE MODE

Suitable only for patients whose natural humidification system (i.e. upper airways) has not been bypassed, but are receiving gas via a facemask or similar.

Aims to deliver humidified gases (31°C, 32 mg/L).

Invasive mode is recommended for all infant respiratory therapies.



MUTE BUTTON

The mute button silences the humidifier's audible alarm. The muted time depends on the alarm condition. In general, alarms will be muted for 2 minutes.



SET-UP INDICATORS



Heater wire connector

- Is the heater wire adapter connected to the base?
- Is the heater wire adapter connected to the circuit?
- Try a new heater wire adaptor.



Temperature/Flow probe connector

- Is the temperature probe connected to the base?
- Try a new temperature probe.



Chamber probe and airway probe

- Is the chamber probe correctly inserted into the circuit?
- Is the airway probe correctly inserted into the circuit?
- Is there condensate or debris on the probe?



Chamber or airway probe alarm with probe connector alarm

- Indicates an apparent fault with the chamber or airway probe. The humidifier will stay in stand-by until the chamber or airway temperature drops below 50 °C.
- Is there condensate or debris on the probe?



Water out indicator

- Is there water in the chamber?
- Is there water in the bag?
- Is the feed set kinked?
- Has the flow of water to the chamber stopped due to system back pressure?

OPERATIONAL ALARMS



Temperature indicator

Together with displayed temperature below 35.4 °C.

- Is there a fan? If so, redirect away from breathing circuit
 - Is there a draft? If so, redirect away from breathing circuit
 - Together with a displayed temperature exceeding 41 °C or if the airway temperature exceeds 43 °C.
 - Monitor the displayed temperature closely
- Heating will be discontinued to the humidification chamber and breathing circuit until the displayed temperature decreases to within normal limits.

If the alarm continues, replace the relevant component and contact your local Fisher & Paykel Healthcare representative.



See manual indicator

- This indicates a hardware fault. Note error code on display and refer to manual.
- Turn the humidifier off, remove it and all accessories from use.

F&P 850 System

Invasive Ventilation for Infant Setup

CIRCUIT CODES

RT265 >4 L/min

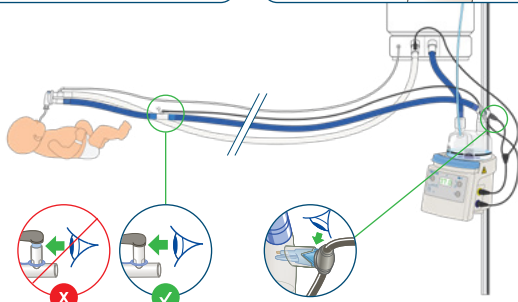
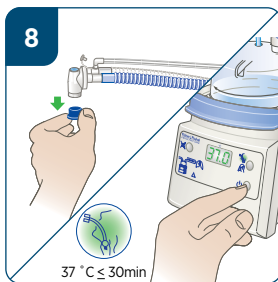
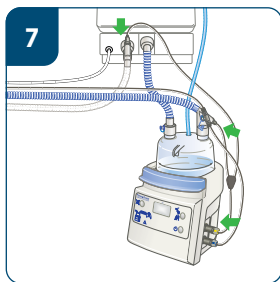
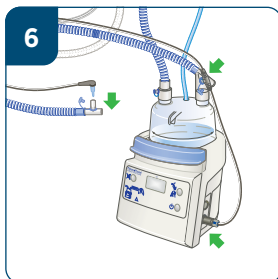
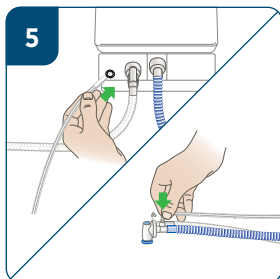
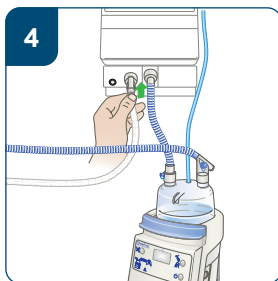
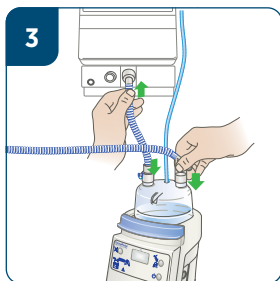
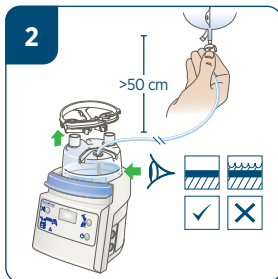
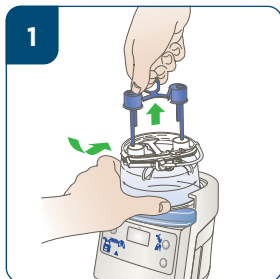
RT266 <4 L/min

RT267 SLE2000, 2000HFO

RT268 SLE4000 & SLE5000

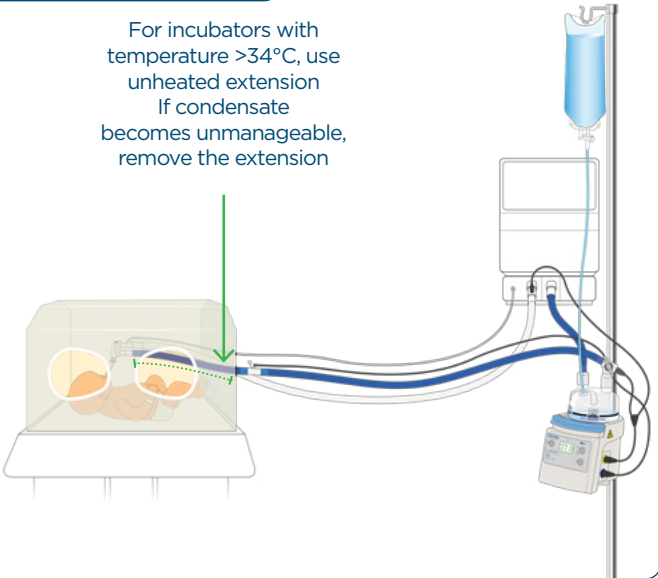
RT269 SLE6000

Not all models are available in all markets.

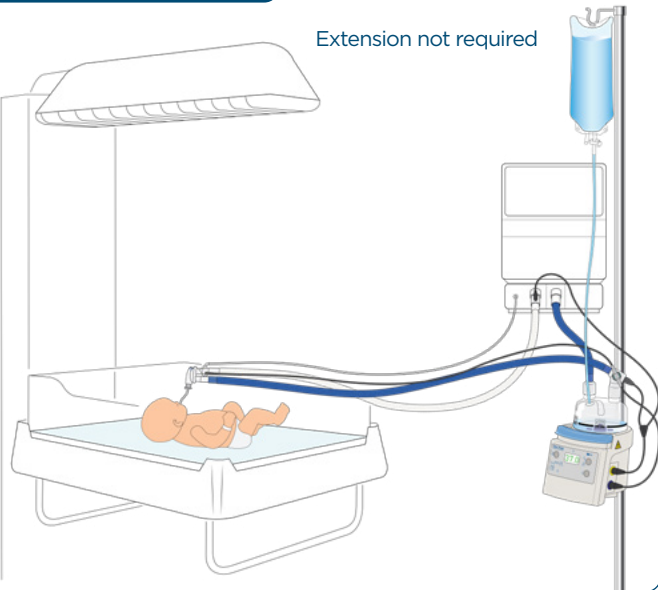


Incubator

For incubators with
temperature $>34^{\circ}\text{C}$, use
unheated extension
If condensate
becomes unmanageable,
remove the extension

**Infant Warmer**

Extension not required



F&P 850 System

Paediatric Circuit Application

The recommended point to change from an infant circuit to an adult circuit is 120ml V_T between about 12-15kg depending on your ventilation strategy.

